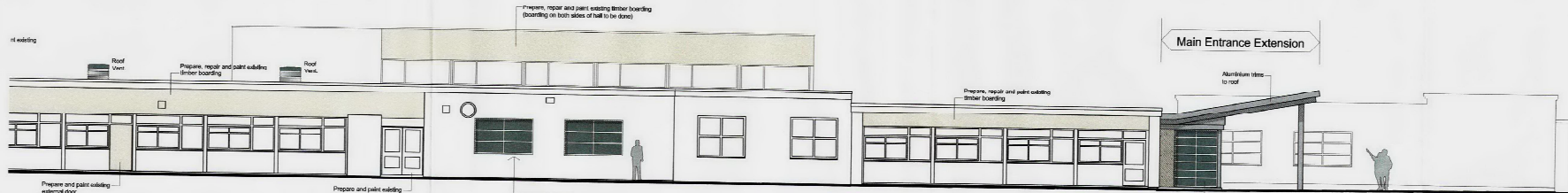
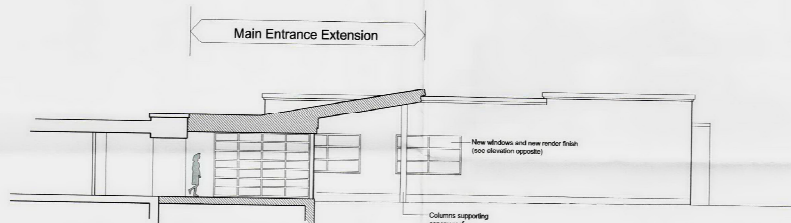


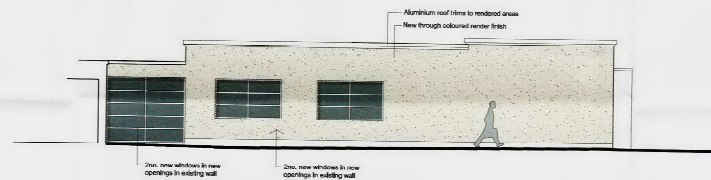
See drwg. 10A for continuation



PROPOSED WEST ELEVATION Cont'd

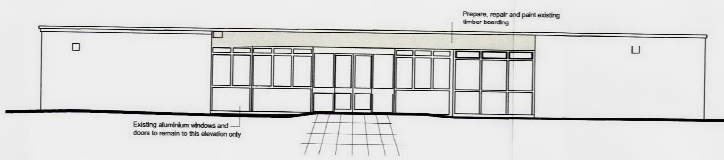


SECTION through Main Entrance

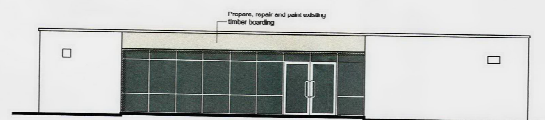


PROPOSED WEST ELEVATION (part)  
(showing new rendered wall adjacent to Main Entrance)

STOCKTON BOROUGH COUNCIL  
PLANNING  
08 OCT 2012  
DATE RECEIVED



PROPOSED SOUTH ELEVATION to New Art Block



PROPOSED EAST ELEVATION to New Art Block



PROPOSED NORTH ELEVATION to New Art Block



PROPOSED WEST ELEVATION to New Art Block



SUB STATION ELEVATIONS (scale 1:200)

B	New Sub-station location as requested	06.10.12
A	Issued for Planning Application	16.07.12
Rev	Description	Dim Chk Date
1	PRELIMINARY	APPROVAL
2	INFORMATION	TENDER
3	CONSTRUCTION	



Development & Neighbourhood Services  
Head of Technical Services Richard McGowan B.Eng., C.Eng., M.I.C.E.  
P.O. Box 229, Kingsway House, West Freeland, Billingham, TS23 2YL  
Telephone (01462) 309539. Email: technicalservices@stockton.gov.uk

Project  
Northfield School and Sports College  
Thames Road, Billingham  
School Redevelopment Project

Content  
PROPOSED ELEVATIONS  
Sheet 4 of 4

Date	July 2012	Drawn	Checked	Scale	@ A1	Rev	B
Drawn	mds	Checked		Scale	1:100	Rev	B